



# THE DREAM KEEPER

FROM THE PRESIDENT

FEBRUARY 2003



*Preservationists visit the Colorado Railroad Museum (photo by Dan Straight)*

1. Time has really passed in a hurry. I hope the New Year is treating everyone all right. Colorado certainly needs snow. Lakes and reservoirs are below 50% filled.

2. The James Peak Wilderness and Protection Area Act was passed and signed but we seem to be in a holding pattern. Are we the victim of priorities? How can we penetrate on-going schedules? Gilpin and Grand Counties have stated they are in favor of proceeding with the restoration of the Pass. I have contacted the U.S. Forest Service for dates to discuss the requirements to proceed and time has continued. Rollins Pass is listed as a recreation route. With proposed actions, approved projects and continuing fire danger there definitely is a delay.

3. The nomination for Rollins Pass/Moffat Road to be placed on the Colorado Preservation, Inc. "Most Endangered List" did not make the final "Saving Places" list. I was informed that the submission scored 81 points out of 90. What this actually means is unknown, but I was requested to resubmit next year. I am to receive a review of the submission with recommendations for improvement. It appears there is a definite set of requirements the review committee considers. One comment I heard was, "Members felt that the Counties should be more responsible and involved in restoring the road." Having just attended the large Western Heritage Conference where 750 preservationists attended, I have concluded my presentation of the total road may have been too extensive. That County and Forest Service responsibilities should be expanded. The route could be divided into projects with the Needle's Eye Tunnel as the initial objective to restore. At the Conference the Preservationists named only five sites for the "Saving Places" list: 1. The "City Ditch," which runs through Littleton, Denver, and Englewood in Douglas, Arapahoe and Denver Counties; 2. Hutchinson Homestead and Ranch, one of the the oldest cattle ranches in the Arkansas Valley; 3. The Kit Carson Hotel and Elks Lodge in La Junta; 4. Native America Arboreal Wickiup and Teepee Sites (a survey must be conducted to find them); and 5. The Satank (Pink) Bridge near Carbondale in Garfield County.

4. As requested by Colorado Preservation, Ken Shaver joined me to lead 20 Conference attendees on a bus trip to the Colorado Railroad Museum. I used the bus ride to brief on Rollins Pass and RPRA. It was a good experience with many comments. On arrival at the museum, Charles Albi and other volunteers met us and even had a locomotive with passenger car hooked together. We climbed aboard the City of Boulder's recently refurbished passenger car to circle the museum facility a number of times as the museum presentation was made. We then explored the private car of Burlington and Northern President Charles E. Perkins. What luxury with its parlor area, pullman bunks, dining table set with china, and then the kitchen! Of course a shower and restroom

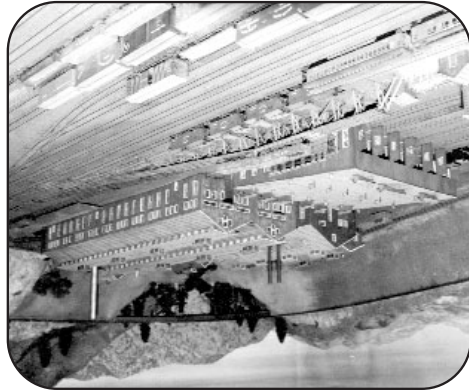
were included. We then watched the uncoupled locomotive enter the turntable to be rotated by manpower (two) to the roundhouse for night storage. The museum, the sales and book area were then visited. Everyone was greatly impressed with the tour.

5. Nita and I visited Ken Shaver's condominium to see his "N" gauge model railroad. What an installation! He is duplicating the "Hill Route" of the Denver and Salt Lake. Those small cars and radio-controlled locomotives were something to watch. The layout goes along the walls of two basement rooms. He has a lot of tedious work to accomplish before it is completed. His engineering to have the track circle inside the mountain before coming out under the "Loop Trestle" was as challenging as the original route layout. It was quite a surprise to see the Arrow Townsite had a "Dan's Cafe" with a sign "All the beans you can eat 15 cents." This was in my honor, as I pass out Nita's baked beans at our Annual Picnic. I took a number of photos and really want to go back when he has all of the backgrounds and painting completed.

6. The Annual Meeting will be Monday night May 19, 2003, at Meadows Branch Public Library, 4800 Baseline Road, Boulder Colorado at 6:30 p.m.



Dan Straight  
President



Ken Shaver's "N" Gauge Model of Uiah Junction  
(Photo by Dan Straight)



P.O. Box 1082  
Longmont, Colorado 80502-1082